

Composed for Yarn/Wire Institute, a homage to Aphex Twin

Two pianos to be prepared with brass screws:

The image shows a musical score for two pianos. Piano 1 is on top, with a treble clef on the upper staff and a bass clef on the lower staff. Piano 2 is below it, also with a treble clef on the upper staff and a bass clef on the lower staff. The treble staff of Piano 2 has an '8va' marking above it, indicating an octave transposition. The notes are mostly quarter notes and half notes, with some accidentals (sharps and flats).

Percussion:

Suspended Cymbal

Sizzle Cymbal

Snare

Tom-tom

Kick Drum

Temple Blocks (5)

Crotales (one set of both octaves)

Vibraphone

Sampler (samples to be mapped onto a controller and triggered by performer)

Samples and Max patch can be downloaded here:

<https://www.dropbox.com/sh/3pznv8d53cjvx3b/AAB-Dk6wC-pG4IMHq0z1F8C0a?dl=0>

Mallets:

4 x snare sticks

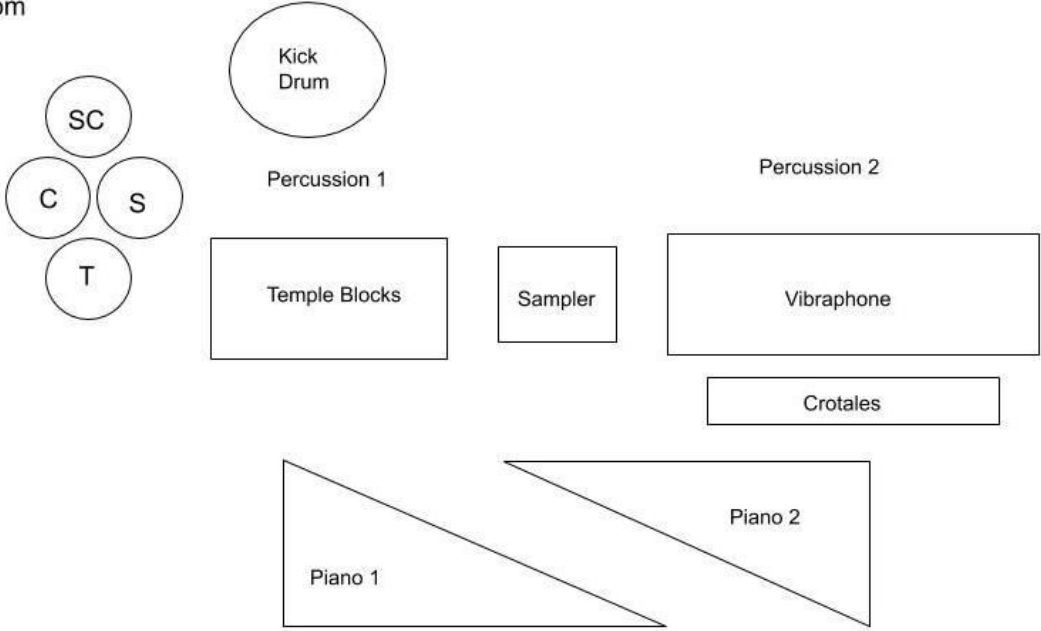
4 x yarn mallets

2 x wood mallets

2 x Crotale mallets

Stage Setup:

ZC- Sizzle Cymbal
C - Cymbal
T - Tom - tom
S - Snare



Notations

Percussion:

Let vibrate, unless indicated to dampen



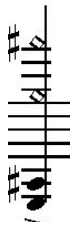
Percussion

	Kick Drum	Tom	Snare	Cymbal	Sizzle Cymbal	Cymbal (scrape)	Temple blocks

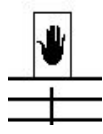
Piano:



Mute strings



Touch strings at node for harmonics (diamond note head)



Slap strings with palm



Slide fingers on string

Xphae Drones

for two piano, two percussion and electronics

Kitty Xiao (2019)

A

Glitch ♩ = 70

Musical score for section A, 'Glitch', in 3/4 time with a tempo of ♩ = 70. The score is for two percussionists, two pianos, and electronics. Percussion 1 includes Snare, Sizzle, Tom, Cym, and K.D. Percussion 2 includes Crotales, Sample 3, Sample 4, Sample 5, Sample 6, and Sample 7. Piano 1 and Piano 2 both feature a sustain pedal throughout. Dynamics include *f*, *sf*, *ff*, *mf*, and *sfz*. The score includes various rhythmic patterns such as triplets and accents.

B Momentum

Musical score for section B, 'Momentum', in 3/4 time. The score is for two percussionists, two pianos, and electronics. Percussion 1 includes TB. Percussion 2 includes Sample 8, Sample 9, and Sample 10. Piano 1 and Piano 2 both feature a sustain pedal throughout. Dynamics include *ff*, *f*, *mf*, and *sfz*. The score includes various rhythmic patterns such as triplets and accents.

9

Perc 1. *f* *mf* *f* *p < mf* *mp* *p < mp*

Crot. T.B. Crot. Vib.

Perc 2. *mf* *f* *f* *mp < f* *f* *mp* sustain pedal throughout

Pno. 1. *sfz* *mf*

Pno. 2. *mp* *sfz* *mf* *pp*

8va both hands RH only



13

Perc 1. *p* *mp* *mf*

scrape with back of drum stick

Perc 2. *p* *mf*

T.B.

Pno. 1. *mp* *f*

Pno. 2. *mp* *f*

8va both hands

17

Perc 1. *p < f* *p < f* *p < f* *p < f*

Perc 2.

Pno. 1

Pno. 2



21

Perc 1. // *mp < mf* *p < mf* *mp < mf* *p < mf* *p < mf* *p < mf* *p < mf*

Perc 2. *mf* *Crot.*

Pno. 1

Pno. 2

25

p < *mf* *p* < *mf* *mp*

Perc 1.

Perc 2.

Pno. 1

Pno. 2



29

Crot.

Perc 1.

Perc 2.

Pno. 1

Pno. 2

mf *mp*

32 Perc. 2 *mf*

Pno. 1 *mf*

Pno. 2 *V*

35 Perc. 2 *mp*

Pno. 1 *mp*

Pno. 2 *p*

39 Perc. 2 *mp* *poco rit.* **D** = 56

Pno. 1 *p* *gradually depress U.C.*

Pno. 2 *mp*